

### TECH PACK DETAILS

<b>PO#</b>		<b>TECH PACK ID#</b>	
<b>BIN#</b>		<b>DESIGN SPEC#</b>	<b>SPEC_OTC-RAP-0084-19</b>
<b>DATE PO ISSUED:</b>	17-Apr	<b>SPEC COMPLETION DATE:</b>	17-Apr
<b>SHIP DATE:</b>	23-Jul	<b>DESCRIPTION:</b>	LADIES FLANNEL PANTS
<b>REVISED SHIPDATE</b>		<b>STYLE#</b>	
<b>VENDOR:</b>		<b>SEASON:</b>	FW19
<b>RETAILER:</b>		<b>SIZE RANGE:</b>	XS-XXL
<b>LICENSOR + APP#</b>		<b>COLLECTION:</b>	
<b>REPEAT:</b>		<b>FABRICATION:</b>	100% COTTON, 160 GSM FLANNEL

### PRODUCT SAFETY TESTING

<b>TESTING REQUIRED?:</b>	YES -	<b>FORM SUBMITTED:</b>	
<b>TEST RESULT:</b>		<b>RESULT DATE:</b>	

### SEAL TAG ID#s

<b>BLUE TAG ID#</b>		<b>YELLOW TAG ID#</b>		<b>GREEN TAG ID#</b>	
---------------------	--	-----------------------	--	----------------------	--

### QC DATE LAST MODIFIED

NO DATE ENTERED

### LINESHEET

#### LADIES FLANNEL PANT

**1/2" COTTON HERRINGBONE TAPE DRAWCORD**

**FLANNEL**

**CORDED PIPING**

**PACKAGING PUT-UP:**

**FEATURES:**

- 100% COTTON FLANNEL 140GSM
- 1/2" COTTON HERRINGBONE TAPE DRAWCORD
- CUFFED WITH CORDED PIPING

**REFERENCE IMAGE:**

**SIZE:** XS, S, M, L, XL, XXL

**COLOUR PALETTE**

TRILE MAY 19-4600 TCK	ARCTIC 19-4911 TCK	SWAIN 19-1302 TCK	ANTHRACTIC 19-4807 TCK	CADET 19-3902 TCK	SILVER PINK 14-556 TCK	WOOD INWOOD 19-4605 TCK	COFFEE TONER 19-5219 TCK
CANAL BLUE 14-4910 TCK	VAPOR BLUE 14-4202 TCK	DARK EARTH 19-1000 TCK	BRIGHT WHITE 19-0801 TCK	BLACK CHERRY 19-1728 TCK	DATMEL 19-3401 TCK	BEEF 19-1988 TCK	

STJ

**GETEX**

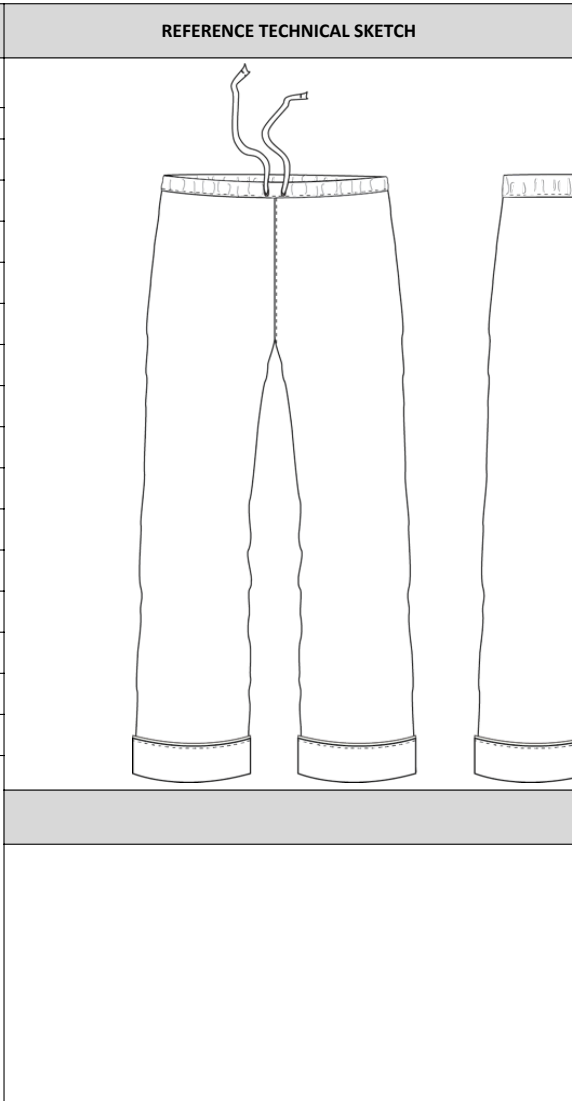
All the patterns, colour combinations and designs contained herein are the exclusive property of Getex Hosiery, Inc. and is intended for use of the party to which it is addressed and may contain information that is privileged, confidential and exempt from disclosure. Information contained herein cannot be reproduced, copied and/or distributed to any third party other than it's intended recipient without prior written approval of Getex Hosiery, Inc.

# PJ PANTS

## GANDER FLANNEL PAJAMA PANTS- LADIES

PROFILE CODE: SW-PNT-000

CODE	AREA MEASURED	OL (+/-)	MENS				
<i>ALL MEASUREMENTS ARE IN INCHES. FLAT MEASUREMENTS SHOWN</i>							
SIZE			S	M	L	XL	XXL
A	WAIST RELAXED	1/4	14 1/2	15 1/2	16 5/8	17 3/4	19
B	WAIST - EXTENDED	1/4	20 1/4	21 1/2	23	24 1/2	26 1/4
C	WB HEIGHT	1/8	1 1/8	1 1/8	1 1/8	1 1/8	1 1/8
D	WAIST DRAWCORD LENGTH - TOTAL	1/2	57 1/2	60	63	66	69 1/2
F	FRONT RISE - FROM TOP EDGE OF WAIST	3/8	9 7/8	10 1/2	11	11 1/2	11 7/8
G	BACK RISE - FROM TOP EDGE OF WAIST	3/8	15 3/8	16	16 7/8	17 3/4	18 1/4
H	LOW HIP POSITION FROM TOP OF WAIST	0	7 1/2	8	8 3/8	8 3/4	9 1/8
I	LOW HIP (V-MEASURE)	3/8	21 3/4	23	24 1/2	26	27 3/4
J	THIGH 1" BELOW CROTCH	1/4	12 1/2	13 1/4	14 1/8	15	16
K	KNEE POSITION FROM CROTCH	0	13	13	13	13	13
L	KNEE	1/4	9 1/8	9 3/4	10 3/8	11	11 5/8
M	LEG OPENING, PANT, RELAXED	1/4	7 5/8	8 1/4	8 1/2	8 3/4	9
N	INSEAM - PANTS, REG.	3/8	31 1/2	31 1/2	31 1/2	31 1/2	31 1/2
O	FRONT POCKET POSITION - FROM WB SEAM	1/8	1 1/4	1 1/4	1 1/4	1 1/4	1 1/4
S	CUFF HEIGHT	1/8	2 1/4	2 1/4	2 1/4	2 1/4	2 1/4



**Notes:**

**REVISIONS:**

Profile Created By: RYAN 4/15/2019

TECHNICIAN: RYAN

**BOM: FABRICATIONS**

ITEM DESCRIPTION	QUALITY	COMMENTS
SELF FABRIC	CONTENT: 100% COTTON	WEIGHT: 160 GSM FLANNEL
	YARN GAUGE:	

**BOM: TRIMS**

ITEM DESCRIPTION	CONTENT / COLOUR	SIZE	SOURCE	QTY	COMMENTS
FLAT ELASTIC	WHITE	1.25" WIDTH	VENDOR SOURCED	1	INSIDE WAISTBAND
HERRINGBONE TAPE	COTTON, SEE DESIGN SPEC	1/2"	VENDOR SOURCED	1	INSIDE WAISTBAND
FUSIBLE INTERFACING	WHITE	MID WEIGHT	VENDOR SOURCED	N/A	INSIDE WAISTBAND
THREAD	SPUN POLY, DTM SELF	T30	A&E OR COATS	N/A	ALL STITCHING, BARTACKS
PIPING	CORDED PIPING, SEE DESIGN SPEC	1/16" VISIBLE	VENDOR SOURCED	2	LEG OPENING CUFF SEAM

**BOM: LABELS/EXTERNAL LOGO**

ITEM DESCRIPTION	DESCRIPTION	SIZE	SOURCE	QTY	COMMENTS
MAIN LABEL	LAZY MONDAYS WOVEN MITERED MAIN LABEL	TBD	VENDOR SOURCED	1	CB INTERIOR WB SEAM
SIZE/COO LABEL	LAZY MONDAYS WOVEN SIZE/COO LABEL	1" X 3/3"	VENDOR SOURCED	1	CENTERED AT BOTTOM OF MAIN LABEL
CARE/CONTENT LABEL	SATIN CARE CONTENT LABEL (WHITE), PRINTED	TBD	VENDOR SOURCED	1	WEARER'S LEFT INTERIOR SIDE SEAM 2" BELOW WB SEAM

**BOM: HANGTAGS/PACKAGING**

REFER TO GANDER OUTDOORS OWN BRAND STANDARD GUIDELINES FOR HANGTAG PLACEMENT

ITEM DESCRIPTION	DESCRIPTION	SIZE	SOURCE	QTY	COMMENTS
MAIN HANGTAG	LAZY MONDAYS MAIN HANGTAG - CLAMSHELL	63.3 MM X 126.8 MM	VENDOR SOURCED	1	
UPC STICKER	UPC STICKER W/ RETAIL PRINTED - BACK OF HANGTAG, UPC VISIBLE IN POLYBAG BY FLIPPING TAG	48 MM X 25 MM	MAXIM	1	PRINTED STICKER, USING ONE OF THE FOLLOWING BARCODE FORMATS: UPC-A, UPC-E, EAN-13, EAN-8
HANGER	12" BOTTOM HANGER W/ SIZER	58 X 41.5 X 39 CM	MAINETTI	1	GENERIC
POLYBAG	POLYBAG 1.00 MIL FOR INDIVIDUAL PACKAGING INDIVIDUALLY FOLDED & BAGGED	N/A	VENDOR SOURCED	1	GENERIC

**CONSTRUCTION DETAIL**

**TECHNICAL ILLUSTRATION**

1/2" COTTON CANVAS DRAWCORD TUNNELED THROUGH WB. ENDS DOUBLE TURNBACK AND TOPSTITCHED. DRAWCORD SECURED WITH BARTACK AT CB WB.

THREAD BUTTONHOLES FOR DRAWCORD OUT

SELF-FACED CONTINUOUS WB. W/ WIDE ELASTIC. INSERTED INSIDE DAL14TGG TOPSTITCHING AT BOTTOM OF WB

Leg opening cuff

Overlock Piping Bottom cuff

1/16" POP-LIN CORDED PIPING AT CUFF SEAM EDGESTITCHED.

All topstitching = 10-12 SPI  
Internal stitching = 10 - 12 SPI

SN/DN lockst. (ISO 301)  
Safety stitch (ISO 516)  
SN serge (ISO 504)

Tie a bow when shipping

Cutting Instruction	
One Direction Print	One-way
Tossed Print	One-way within garment
Place	One-way within garment

DESCRIPTION	DETAILS	STITCH TYPE	STITCH ILLUSTRATION
WAISTBAND	ELASTIC ENCASED INSIDE DOUBLE FOLD WAISTBAND, TOPSTITCHED	#301 LOCKSTITCH, 10-12 SPI	
DRAWCORD	DRAWCORD INSERTED THROUGH BUTTONHOLES AT CF SPACED 1" APART. STITCHED TO WAISTBAND AT CB. ENDS OF DRAWCORD DOUBLE FOLDED AND STITCHED	#301 LOCKSTITCH, 10-12 SPI #304 BUTTONHOLE	
FRONT RISE	SAFETY STITCHED TOGETHER, FAKE FLY ADDED AT CF, TOPSTITCHED. BUTTONS SEWN DOWN ON FLY, 3" SPACING	#516 - 5 THREAD SAFETY STITCH #304 BUTTONSTITCH	
BACK RISE	SAFETY STITCHED TOGETHER, TOPSTITCHED	#516 - 5 THREAD SAFETY STITCH #301 LOCKSTITCH, 10-12 SPI	
INSEAM/OUTSEAM	SAFETY STITCHED TOGETHER, INSEAM TOPSTITCHED	#516 - 5 THREAD SAFETY STITCH	
HEM/CUFF	CUFFED HEM, CORDED PIPING INSERTED AT CUFF SEAM	#301 LOCKSTITCH, 10-12 SPI	

\*\* DO NOT START PRODUCTION UNTIL BRAND MANAGEMENT APPROVES SAMPLE \*\*

TAB: CONSTRUCTION DETAIL & BOM



CONSTRUCTION DETAIL COMMENTS						
WEIGHT	PLEASE SELECT		SOCK FIT: NAHM#	PLEASE SELECT		QTY RECEIVED:
WINTERWEAR FIT: HAND OR HEAD FORM	PLEASE SELECT		SOCK QUALITY: FLOATS AND GRIN THROUGH	PLEASE SELECT		
BLUE TAG ID#		YELLOW TAG ID#		GREEN TAG ID#		
PRODUCT QUALITY CONTROL COMMENTS						
	DESIGN	COLOUR	QUALITY/WORKMANSHIP	SIZE	NOTES	APPROVAL STATUS
STAGE: PLEASE SELECT						PLEASE SELECT
COMMENTS BY:						
DATE RECEIVED:						
STAGE: PLEASE SELECT						PLEASE SELECT
COMMENTS BY:						
DATE RECEIVED:						
STAGE: PLEASE SELECT						PLEASE SELECT
COMMENTS BY:						
DATE RECEIVED:						
STAGE: PLEASE SELECT						PLEASE SELECT
COMMENTS BY:						
DATE RECEIVED:						
** VENDOR PERFORMANCE RATING HAS BEEN UPDATED AT THIS STAGE **						
TOP						PLEASE SELECT
COMMENTS BY:						
DATE RECEIVED:						

\*\* DO NOT START PRODUCTION UNTIL BRAND MANAGEMENT APPROVES SAMPLE \*\*

TAB: DESIGN, QUALITY AND SIZING

DESIGN QC JPGs

STAGE: PLEASE SELECT

DATE & SOURCE

STAGE: PLEASE SELECT

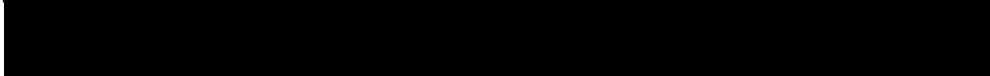
DATE & SOURCE

STAGE: PLEASE SELECT

DATE & SOURCE

**\*\* DO NOT START PRODUCTION UNTIL BRAND MANAGEMENT APPROVES SAMPLE \*\***

**TAB: DESIGN, QUALITY & SIZING JPGS**



**TECHNICIAN:**

**SHIPPING CARTON DIMENSIONS & WEIGHT**

DATE	WEIGHT (kg)	LENGTH (cm)	WIDTH (cm)	HEIGHT (cm)

**NOTES:**

**STICKERS & CARTON QC**

CHECKED FOR:	DATE	NAME	NEXT STAGE

**\*\* DO NOT START PRODUCTION UNTIL BRAND MANAGEMENT APPROVES SAMPLE \*\***

**TAB: STICKER & CARTON QC**

PACKAGING QC					
FIBER CONTENT CONFIRMATION					
DATE	% Cotton/Coton	% Polyester	% Olefin/Olefine	% Other fibers/Autre fibres	%
	% Acrylic/Acrylique	% Elastic/Élastique	% Elastodiene/Elastodiène	%	%
	%	% Nylon	%		
STYLE	% Wool/Laine	% Silicone	%		
	% Viscose	% Iron	%		

FINAL PRODUCT MEASUREMENTS					
DATE	PRODUCT SIZE	FORMAT	HANGING HEIGHT (cm)	WIDTH (cm)	DEPTH (cm)

SPECIAL NOTES					

STAGE	CHECKED FOR:	DATE	NAME	NEXT STAGE
Digital Proof PACKAGING ARTWORK				
Digital Proof BARCODE TICKETING	..... <b>DAISY TO CHECK:</b> CID STICKER POLYBAG STICKER CARTON BARCODE CARTON LAYOUT CARTON DIMENSIONS / WEIGHT <b>**CHECK OTHER TAB FOR DAISY'S COMMENTS**</b>			
Printers Proof Sample				
Mock up / Packing way				
TOP				



VENDOR RATING

	R	4	3	2	1					
Product	PP Date	3		Met original date	Late 2wks	Later than 2 weeks				
	Fit	3		All correct	Majority correct	Inconsistent- Most incorrect				
	Quality	4	Met standards	Minor defect on one or two	Minor defect on most	Major defect poor quality				
	TOP	3		Met original date	Late 2wks	Later than 2 weeks				
	Trade	2			Met original date	Failed to meet target date				
Design	Following Direction	6		Prompt flow of communication clear. Rate 6	Need some follow up, but executes direction well. Rate 3	Does not follow direction. Poor response. Rate 1				
	Colour	4	Match on PP1	Match on PP2	Several PP/ lab dips to match	no successful in matching Rate 0				
Packaging	Execution	2			overall good product	Poor overall quality				
	Quality	4	Match Col/Quality	Match on 2 proof	Actual pkg not match to app	Errors on actual pkg.				
	Following Direction/Communications.	3		Prompt flow of communication clear	Need some follow up, but executes direction well	Does not follow direction. Poor response.				
	Audit updates	3		Prompt with auto updates	Move to other factories due to unsatisfactory audits	No audits available Rate 0	3	6	13	Gertex Licence Orders Max. 45
Audits & phone communication	phone communication	3		Reachable and able to communicate and follow directions clearly	Reachable but not able to resolve issue or does not follow/understand direction	Not Reachable. Rate 0	3	6	14	Gertex Orders Max. 42
	Testing Integrity	4	app on 1st.	app. On 2nd test	submitted incorrectly Rate 0	Fail on more than 2 tests Rate 0				
Wal-Mart <i>Repeat = within same Year</i>	CTL Target dates	3		Met Target dates	Late 2wks	Later than 2 weeks				
	CTL Trimming & quality	3		Very good	some rejects Extra trimming required.	Unsatisfactory quality. Could not submit for testing.		6	10	Wal-Mart orders Max 58
	CTL Testing	3		Passed 1st test	Resubmit required	Failed second test. Rate 0				
	Meet ship schedule	3		Met original date	Late 2wks	Later than 2 weeks				
OTC	Following Direction/Communications.	3		Prompt to accommodate customer request	Need some follow up, but follows direction well	Refuse to make changes requested by customer or too late to make changes. Rate 0		6	10	Wal-Mart License orders max.61
	Maximum	61					0	0		Repeat GTRX Max 31
		90-100%	70 - 90%	50-70%	49% and under					
		Excellent	Good	Need to improve	Unacceptable.					

---- PLEASE DO NOT OVERRIDE BELOW----

	Product	Design	Packaging	#REF!	Audits & phone communication	Wal-Mart within same Year
#REF!	0%	0%	0%	#REF!	100%	0%
#REF!	0%	0%	0%	#REF!	100%	0%
#REF!	0%	0%	0%	#REF!	100%	0%

%

Submission stage:

Please select

RUSH:

Picture enclosed:

Technician:

Name

Gertex Purchase order number:

Licensor Approval #:

Approval or Direction required by:  
(In order to meet ship date, respond is required)

Please put in date

<u>Description</u>	<u>Style</u>			
		Please select	Please select	Please select
		Please select	Please select	Please select
		Please select	Please select	Please select
		Please select	Please select	Please select
		Please select	Please select	Please select
		Please select	Please select	Please select
		Please select	Please select	Please select

Comments:

<b>Submission stage:</b>	Please select	<b>Technician:</b>	<b>Name</b>
<b>Customer purchase order number :</b>	Please put in Customer PO#	<b>Gertex Purchase order number:</b>	<b>Please put in Gtx PO#</b>
<b>Ship Date:</b>	Please put in date	<b>Approval or Direction required by:</b> (In order to meet ship date, respond is required)	Please put in date
<b>Submission Date :</b>	Please put in date	<b>Picture enclosed:</b>	

Description:	Style:	UPC			
			Please select	Please select	Please select
			Please select	Please select	Please select
			Please select	Please select	Please select
			Please select	Please select	Please select
			Please select	Please select	Please select

**Design, Quality & Sizing:**

**Packaging:**